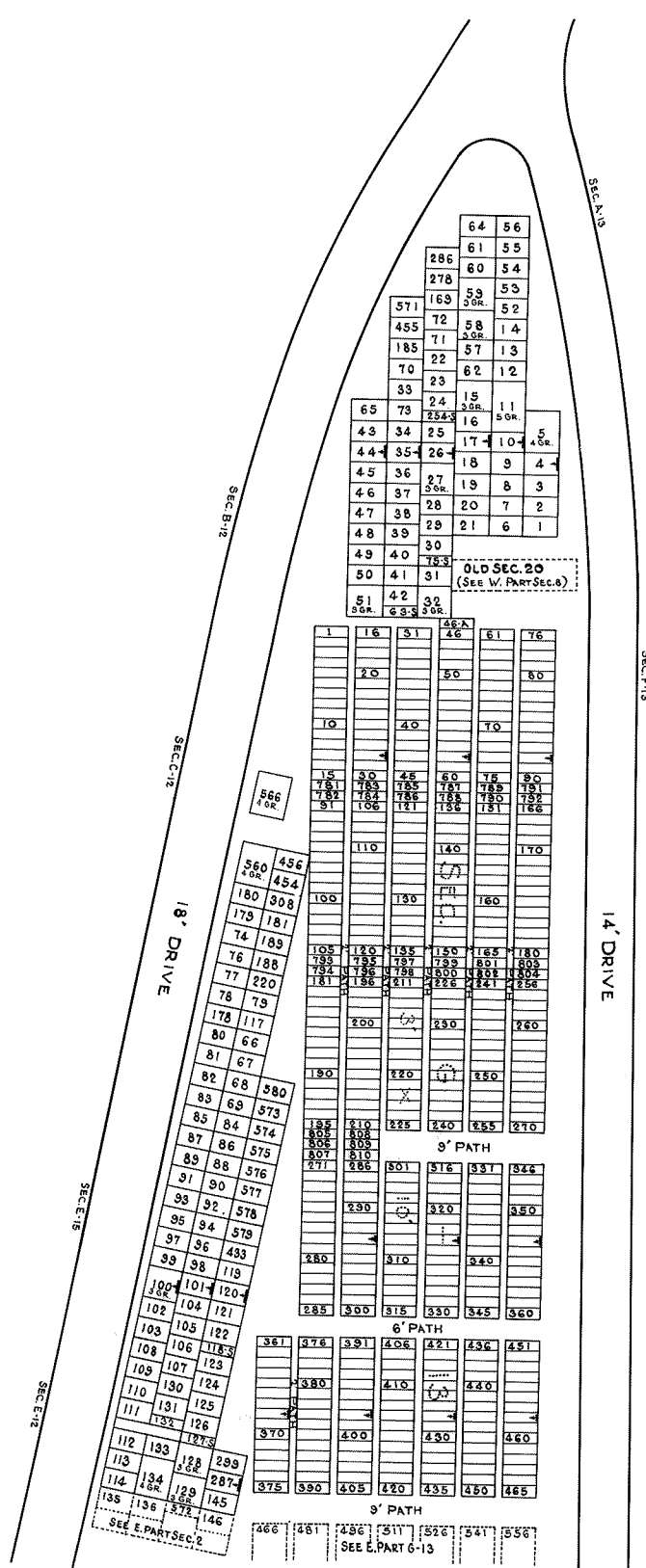
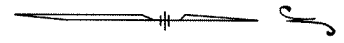


SEE G-13 (WEST PART)  
435 450 465

SEC. 1	W.P.	SEC. 2	SEC. 3	SEC. 4
114	134	129	145	
135	136	142	146	
163	137	141	147	
115	138	142	148	
116	139	143	149	
164	140	144	150	
170	167	159	151	
171	168	160	152	
172	169	161	153	
173	163	217	154	
174	164	162	155	448
175	162	156	192	
176	187	165	157	191
177	186	166	158	190
222	218	209	202	194
227	269	210	203	195
228	213	211	204	196
229	221	212	205	197
230	222	213	206	198
231	223	214	207	199
232	224	215	208	200
233	225	216	209	201
234	241	249	205	264
235	242	250	257	273
236	243	251	258	274
237	244	252	259	275
238	245	253	260	276
239	246	254	261	277
240	247	255	262	278
241	248	256	263	279
280	288	304	312	320
281	289	305	313	321
282	290	306	314	322
283	291	307	315	323
284	292	308	316	324
285	293	309	317	325
286	294	310	318	326
287	295	311	319	327
336	344	352	360	368
337	345	353	361	369
338	346	354	362	370
339	347	355	363	371
340	348	356	364	372
341	349	357	365	373
342	350	358	366	374
343	351	359	367	375
404	411	418	427	435
405	412	419	428	436
406	413	420	429	437
407	414	421	430	438
408	415	422	431	439
409	416	423	432	440
410	417	424	433	441
411	418	425	434	442
412	419	426	435	443
413	420	427	436	444
414	421	428	437	445
415	422	429	438	446
416	423	430	439	447
417	424	431	440	448
418	425	432	441	449
419	426	433	442	450
420	427	434	443	451
421	428	435	444	452
422	429	436	445	453
423	430	437	446	454
424	431	438	447	455
425	432	439	448	456
426	433	440	449	457
427	434	441	450	458
428	435	442	451	459
429	436	443	452	460
430	437	444	453	461
431	438	445	454	462
432	439	446	455	463
433	440	447	456	464
434	441	448	457	465
435	442	449	458	466
436	443	450	459	467
437	444	451	460	468
438	445	452	461	469
439	446	453	462	470
440	447	454	463	471
441	448	455	464	472
442	449	456	465	473
443	450	457	466	474
444	451	458	467	475
445	452	459	468	476
446	453	460	469	477
447	454	461	470	478
448	455	462	471	479
449	456	463	472	480
450	457	464	473	481
451	458	465	474	482
452	459	466	475	483
453	460	467	476	484
454	461	468	477	485
455	462	469	478	486
456	463	470	479	487
457	464	471	480	488
458	465	472	481	489
459	466	473	482	490
460	467	474	483	491
461	468	475	484	492
462	469	476	485	493
463	470	477	486	494
464	471	478	487	495
465	472	479	488	496
466	473	480	489	497
467	474	481	490	498
468	475	482	491	499
469	476	483	492	500
470	477	484	493	501
471	478	485	494	502
472	479	486	495	503
473	480	487	496	504
474	481	488	497	505
475	482	489	498	506
476	483	490	499	507
477	484	491	500	508
478	485	492	501	509
479	486	493	502	510
480	487	494	503	511
481	488	495	504	512
482	489	496	505	513
483	490	497	506	514
484	491	498	507	515
485	492	499	508	516
486	493	500	509	517
487	494	501	510	518
488	495	502	511	519
489	496	503	512	520
490	497	504	513	521
491	498	505	514	522
492	499	506	515	523
493	500	507	516	524
494	501	508	517	525
495	502	509	518	526
496	503	510	519	527
497	504	511	520	528
498	505	512	521	529
499	506	513	522	530
500	507	514	523	531
501	508	515	524	532
502	509	516	525	533
503	510	517	526	534
504	511	518	527	535
505	512	519	528	536
506	513	520	529	537
507	514	521	530	538
508	515	522	531	539
509	516	523	532	540
510	517	524	533	541
511	518	525	534	542
512	519	526	535	543
513	520	527	536	544
514	521	528	537	545
515	522	529	538	546
516	523	530	539	547
517	524	531	540	548
518	525	532	541	549
519	526	533	542	550
520	527	534	543	551
521	528	535	544	552
522	529	536	545	553
523	530	537	546	554
524	531	538	547	555
525	532	539	548	556
526	533	540	549	557
527	534	541	550	558
528	535	542	551	559
529	536	543	552	560
530	537	544	553	561
531	538	545	554	562
532	539	546	555	563
533	540	547	556	564
534	541	548	557	565
535	542	549	558	566
536	543	550	559	567
537	544	551	560	568
538	545	552	561	569
539	546	553	562	570
540	547	554	563	571
541	548	555	564	572
542	549	556	565	573
543	550	557	566	574
544	551	558	567	575
545	552	559	568	576
546	553	560	569	577
547	554	561	570	578
548	555	562	571	579
549	556	563	572	580
550	557	564	573	581
551	558	565	574	582
552	559	566	575	583
553	560	567	576	584
554	561	568	577	585
555	562	569	578	586
556	563	570	579	587
557	564	571	580	588
558	565	572	581	589
559	566	573	582	590
560	567	574	583	591
561	568	575	584	592
562	569	576	585	593
563	570	577	586	594
564	571	578	587	595
565	572	579	588	596
566	573	580	589	597
567	574	581	590	598
568	575	582	591	599
569	576	583	592	600
570	577	584	593	601
571	578	585	594	602
572	579	586	595	603
573	580	587	596	604
574	581	588	597	605
575	582	589	598	606
576	583	590	599	607
577	584	591	600	608
578	585	592	601	609
579	586	593	602	610
580	587	594	603	611
581	588	595	604	612
582	589	596	605	613
583	590	597	606	614
584	591	598	607	615
585	592	599	608	616
586	593	600	609	617
587	594	601	610	618
588	595	602	611	619
589	596	603	612	620
590	597	604	613	621
591	598	605	614	622
592	599	606	615	623
593	600	607	616	624
594	601	608	617	625
595	602	609	618	626
596	603	610	619	627
597	604	611	620	628
598	605	612	621	629
599	606	613	622	630
600	607	614	623	631
601	608	615	624	632
602	609	616	625	633
603	610	617	626	634
604	611	618	627	635
605	612	619	628	636
606	613	620	629	637
607	614	621	630	638
608	615	622	631	639
609	616	623	632	640
610	617	624	633	641
611	618	625	634	642
612	619	626	635	643
613	620	627	636	644
614	621	628	637	645
615	622	629	638	646
616	623	630	639	647
617	624	631	640	648
618	625	632	641	649
619	626	633	642	650
620	627	634	643	651
621	628	635	644	652
622	629	636	645	653
623	630	637	646	654
624	631	638	647	655
625	632	639	648	656
626	633	640	649	657
627	634	641	650	658
628	635	642	651	659
629	636	643	652</	



LOCATION OF GRAVE MARKERS SHOWN THUS  
 ARROW INDICATES DIRECTION GRAVE MARKERS  
 WILL FACE.

ALL LOTS ARE 2 GRAVE LOTS EXCEPT WHERE  
 OTHERWISE NOTED

ALL SINGLE GR. ARE 3'x10' (S)  
 ALL 2 GR. LOTS ARE 6'x10'  
 ALL 3 GR. LOTS ARE 9'x10'  
 ALL 5 GR. LOTS ARE 15'x10'

ADDITIONAL SEC. } G-13

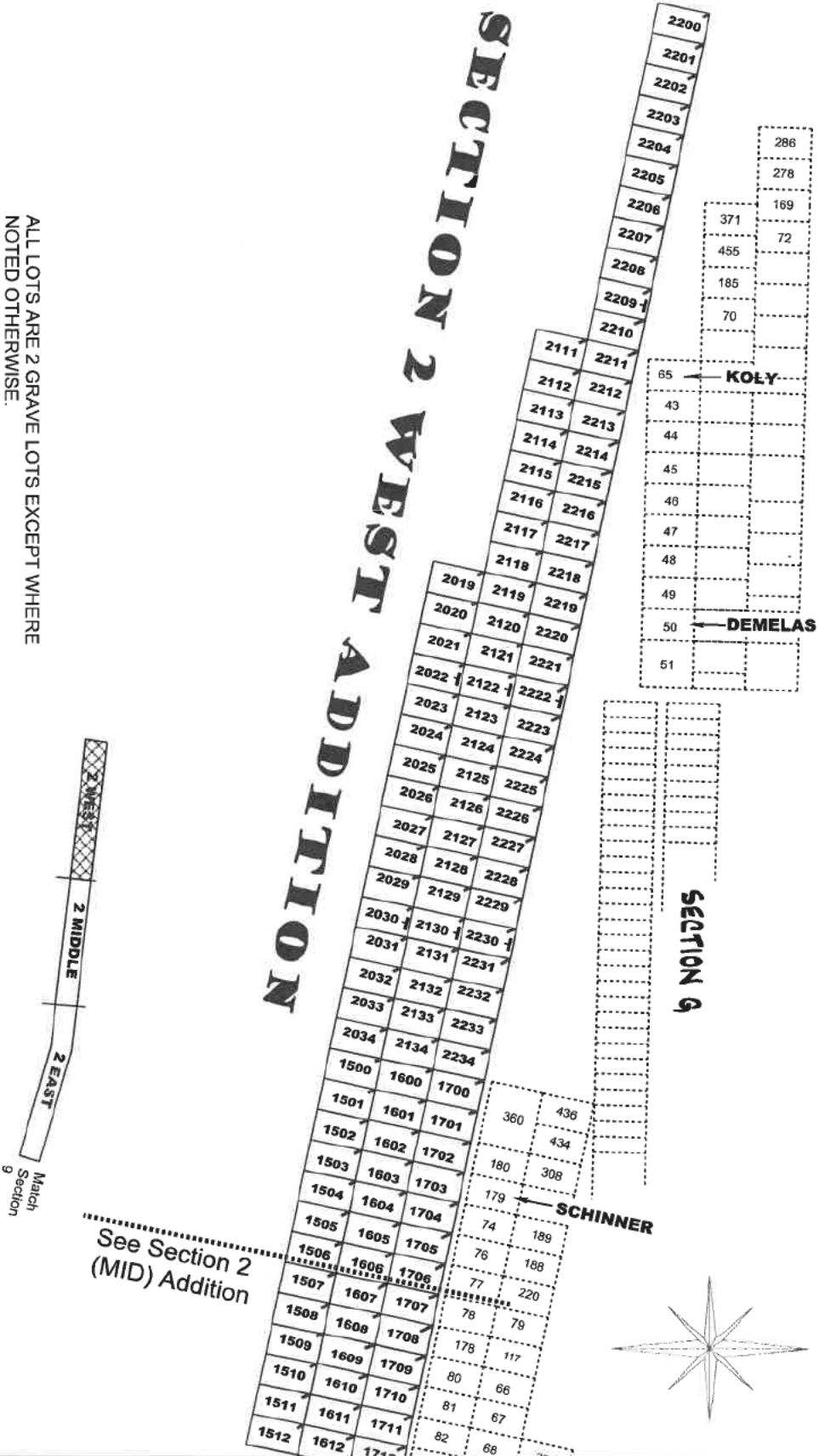
RE-DRAWN FROM OLD SECTION MAP.

**HOLY CROSS CEMETERY**  
**AKRON, OHIO**  
**W. PART SEC. 2**

SCALE 1"=20'  
 G.C.A.S.M.D.  
 MAR. 1956



# SECTION 2 WEST ADDITION



ALL LOTS ARE 2 GRAVE LOTS EXCEPT WHERE NOTED OTHERWISE:

- 2 Grave Lots Are 6' x 10'
- 3 Grave Lots Are 9' x 10'

LOT MARKERS ARE LOCATED AT THE UPPER LEFT HAND CORNER AS YOU FACE THE LOTS.

Grave Marker Locations Shown Thus   
 Arrow Indicates Direction Grave Markers Will Face.

**Holy Cross Cemetery**  
**Akron, Ohio**  
**SECTION 2 WEST**  
**ADDITION**

Scale: 1"=30'  
 Dec., 2017

J. Bischof

See Section 2  
(WEST) Addition

**SECTION 2 MIDDLE ADDITION**

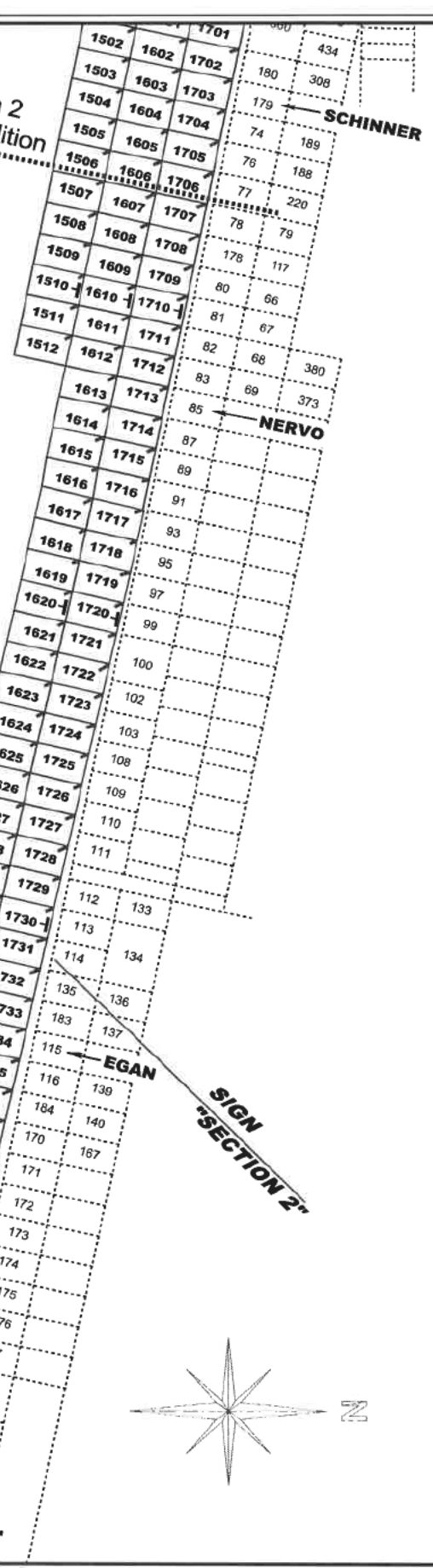
See Section 2  
(EAST) Addition



ALL LOTS ARE 2 GRAVE LOTS EXCEPT WHERE NOTED OTHERWISE:  
 2 Grave Lots Are 6' x 10'  
 3 Grave Lots Are 9' x 10'

LOT MARKERS ARE LOCATED AT THE UPPER LEFT HAND CORNER AS YOU FACE THE LOTS.

Grave Marker Locations Shown Thus **T**  
 Arrow Indicates Direction Grave Markers Will Face.



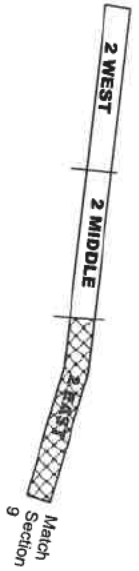
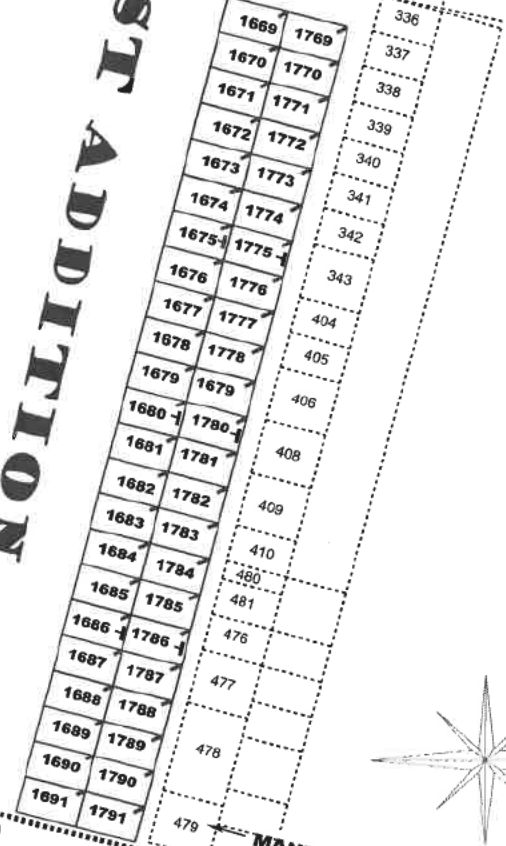
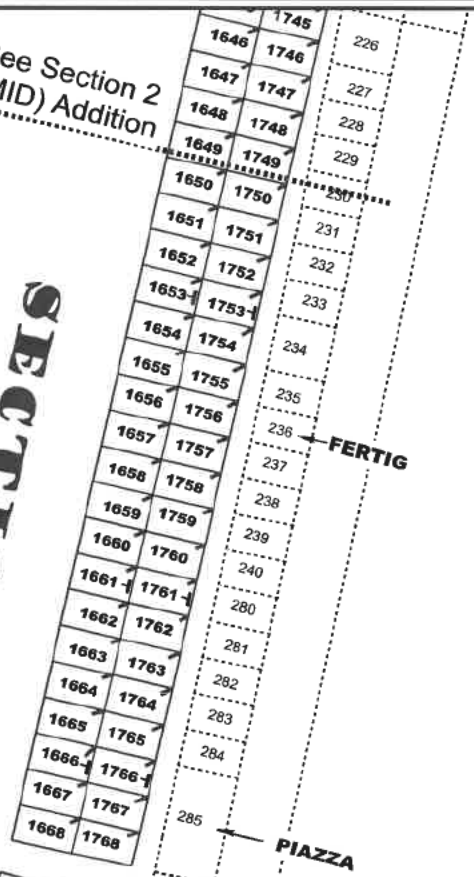
**Holy Cross Cemetery**  
 Akron, Ohio

**SECTION 2 MID ADDITION**

Scale: 1"=30'  
 Dec., 2017


See Section 2 (MID) Addition

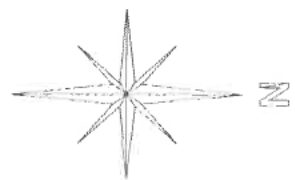
# SECTION 2 EAST ADDITION



ALL LOTS ARE 2 GRAVE LOTS EXCEPT WHERE NOTED OTHERWISE:  
 2 Grave Lots Are 6' x 10'  
 3 Grave Lots Are 9' x 10'

LOT MARKERS ARE LOCATED AT THE UPPER LEFT HAND CORNER AS YOU FACE THE LOTS.

Grave Marker Locations Shown Thus   
 Arrow Indicates Direction Grave Markers Will Face.



See Section 9 Addition

**Holy Cross Cemetery**  
**Akron, Ohio**  
**SECTION 2 EAST**  
**ADDITION**

Scale: 1"=30'  
 Dec., 2017

J. Bischof